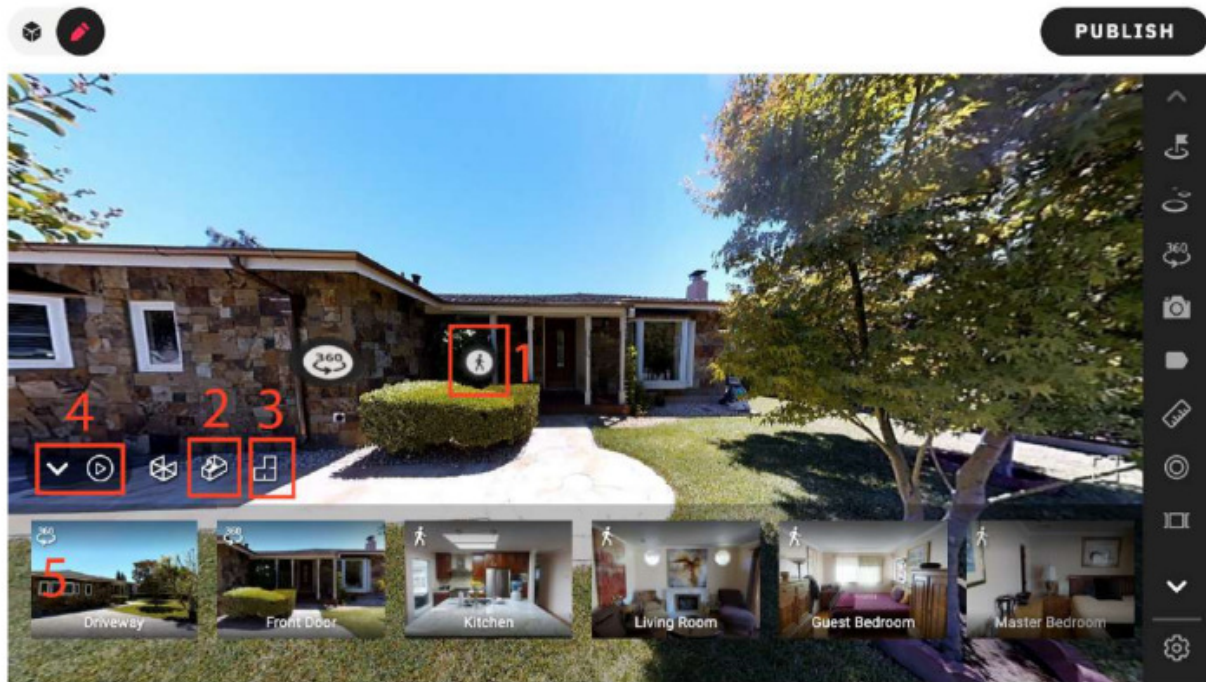


## Virtual Tour Guide



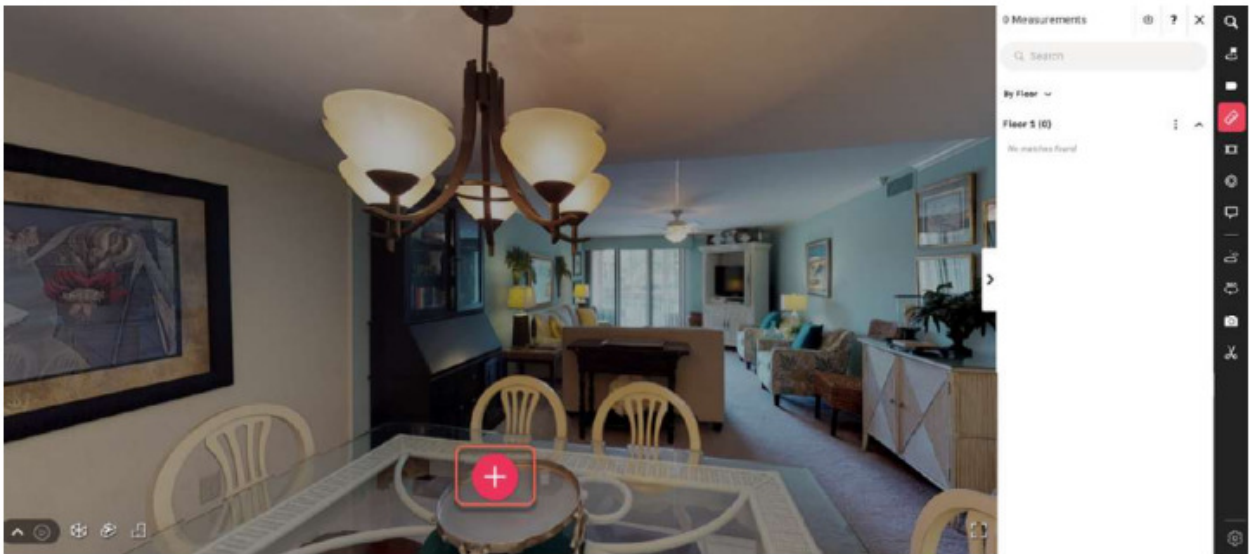
### You can access the 3D model in any of these ways:

1. Go to the *Vista Interna* (Interior View): click on Icon 1 to access the 3D Space. If it is your first visit, you will start from a randomly chosen position; otherwise, from the position of your last session.
2. Go to the *Vista Modello 3D* (Model 3D View): click on Icon 2 to access the 3D Model. Then, use your mouse to move to any spot, and enter into the *Vista Interna*.
3. Go to the *Vista Planimetrica* (Plan View): click on Icon 3 to access a top-view of the plan. Click on any point to enter into the *Vista Interna*.
4. Use the *Controlli del Tour* (Tour Control Keys): click “Play” on Icon 4, press on Back and Forth to complete the tour.
5. Select a Highlight: click on an image of slideshow 5 to access a 3D and 360-degree image of the selected Highlight

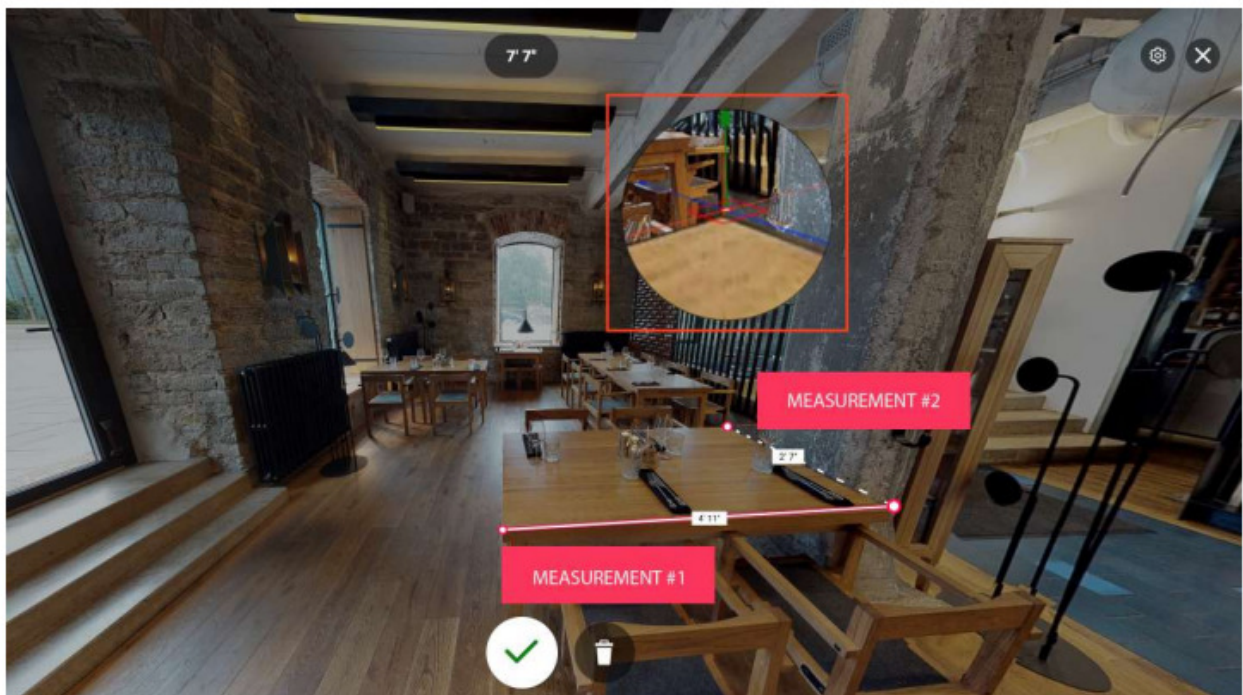
## Measurement

### To measure objects:

1. Open *Vista Interna* (Interior View) of Palazzo Matteucci.
2. Click on the icon for measurement (ruler) in the toolbar on the right.
3. Click on “+” button and change the cursor to viewfinder.



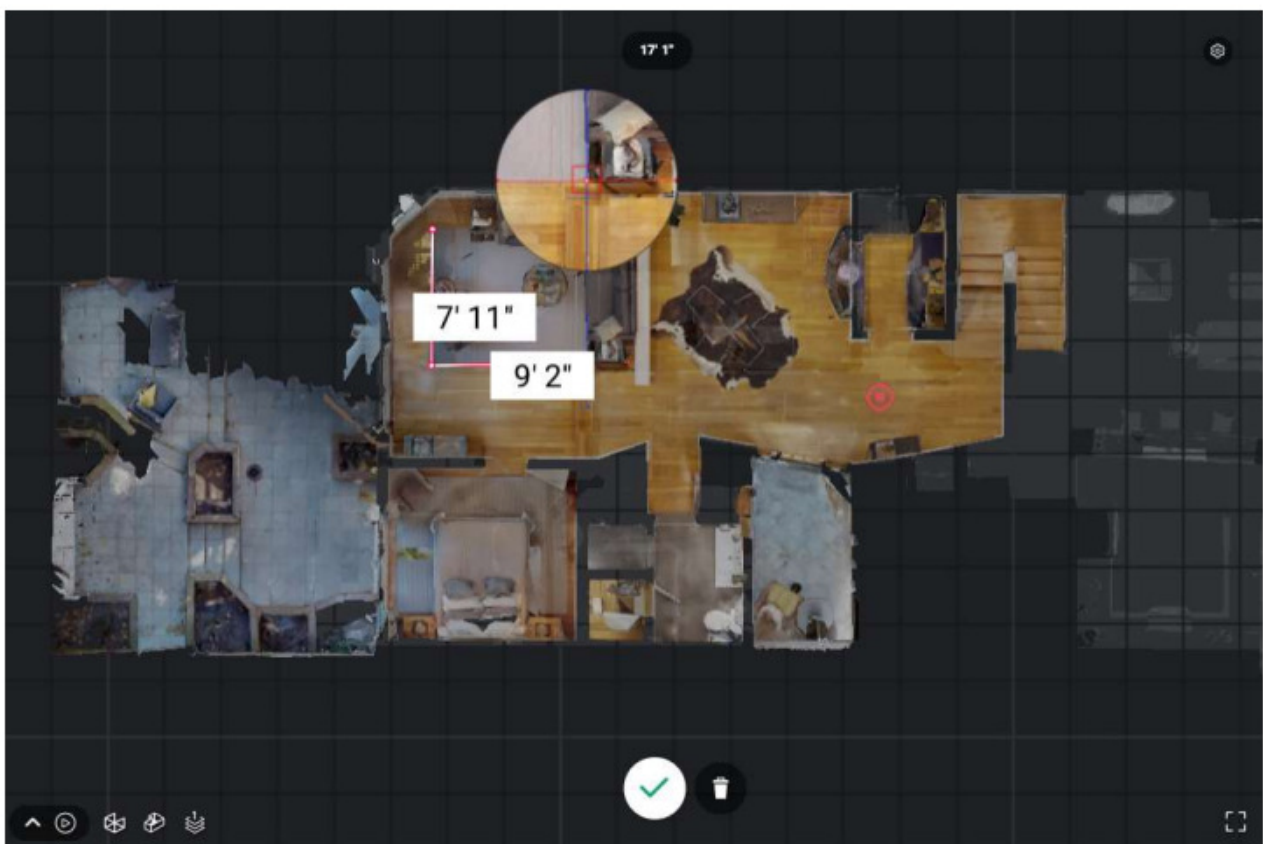
4. Use the viewfinder to accurately align the starting point of your measurement and click to select the starting point.



5. After the first click, the cursor will generate a line moving towards the other point of the measurement.
6. After a second click, the measurement will end. The measurement in cm and 1:1 scale will be shown.
7. To stop creating new measurements, press “Esc” on your keyboard.

**To measure the rooms’ perimeters:**

1. Open *Vista Planimetrica* (Plan View) of Palazzo Matteucci.
2. Click on the icon for measurement (ruler) in the toolbar on the right.



3. Click on “+” and change the cursor to viewfinder.
4. Measure the length and width of the room: click on one side, then drag the line to the other side and click again. The measurement in cm and 1:1 scale will be shown.
5. To stop creating new measurements, press “Esc” on your keyboard.

**Your measurement is visually represented as follows:**

- As a line between the two measurement points.
- In the measurement board on the right.